



Web module is a browser-based solution, which allows installers to access Innovative Security Manager™ (ISM™) data via the internet.

Web module enables the installer to autonomously retrieve customer information, such as address, panel type, zone overview, instructions and alarm log) via a smartphone/tablet.

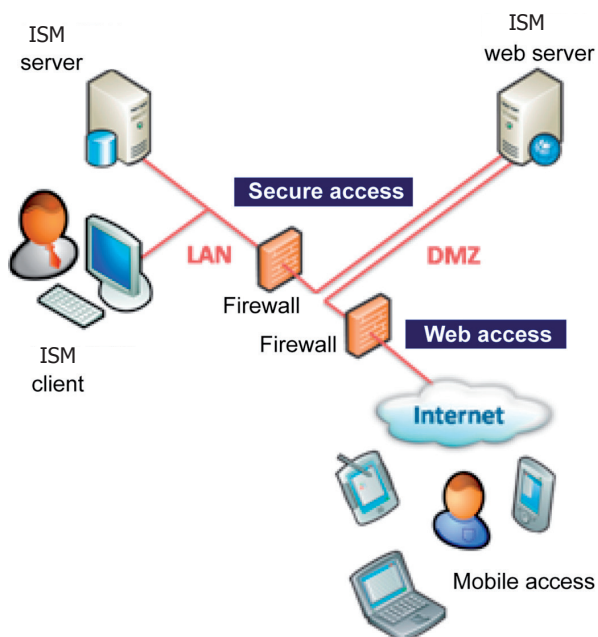
The installer can also place the panel in test mode/ remove the panel from test mode or test the panel and immediately see the results in the alarm log on a smartphone/tablet.

Different security levels enables you to fully customise the solution to the security requirements of each ARC: from having the installer to send a request to the ARC every time to place a panel in test mode to having the installer fully autonomously placing a panel in or removing it from test mode.

Highlighted features

- DMZ, SSL-encryption and ISM™ Passcard provides a high level of security
- Can be customised to the security requirements of the ARC
- Digital communication between installer and ARC reduces the number of phone conversations and waiting time. The installer can autonomously retrieve data without operator involvement
- Browser-based solution is platform-independent and requires only minimal bandwidth
- The installer can automatically have panel codes sent on request
- The installer can immediately see the test results on his/her smartphone/tablet
- The installer automatically receives a text message, when the panel is removed from test mode
- Determine which data, you want to be available for the installer
- Customise browser with colours, fonts etc.

Installer Access



How it works

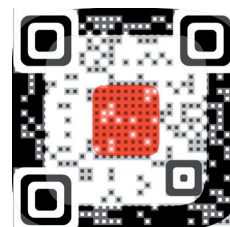
1. On site, the installer logs on to the web module server using a customer number and Passcard.
2. The installer sends a request to the ARC to place the panel/customer in test mode.
3. Depending on the security level, ISM™ then generates the request as an alarm, which the operator must then approve or automatically places the panel/customer in test mode and informs the installer by text message.
4. The installer receives the request approval, logs on to the installation and can then install/test/repair/maintain the installation and immediately see the result in the alarm log.
5. Once the installer is done - and depending on the security level - the installer contacts the ARC, at which point the operator removes the panel from test mode or the installer logs out and ISM™ automatically removes the panel from test mode and sends a text message to the installer.

Security

- The installer must always state a valid customer number as well as ISM™ Passcard, when he/she logs on
- Secure Socket Layer (SSL) encryption secures the connection between the installer's smartphone/tablet and the web server
- Web server located on a Demilitarised Zone (DMZ) and which only contains a copy of the data from ISM™ network. Consequently, the installer does not have access to the ISM™ network itself.

Additional information

- Each installer access requires a separate license
- SSL-encryption requires a certificate



INNOVATIVE